

Clif Mock

CMC-250

..... 1

..... 1

..... 1

..... 2

CMC-250..... 3

© 2004 NuFlo Technologies, Inc.

NuFlo Technologies, Inc.

NuFlo Technologies, Inc.

No. 99104500138,
2004

CMC-250

API 8.3

True-Cut C.

ASME,

1/2 . . .

5- 10-

1. CMC-250

2. ,

3. .

:

100

4. CMC-250. \ ()

5. *NFPA 70*

6. ,

CMC-250

3.

1. ,

2. .

3. (13).

4. (8).

5. (13C) (13A).

6. (13).

1. 5 , ().
 - 5-
 - 10-

: 5,0 100

(21,6) 0 60°F (16°C).

API, 160 , 60°F (16°C), 24 5

160 24 API 60°F (16°C)

2. (8),

(8)

3. () , :

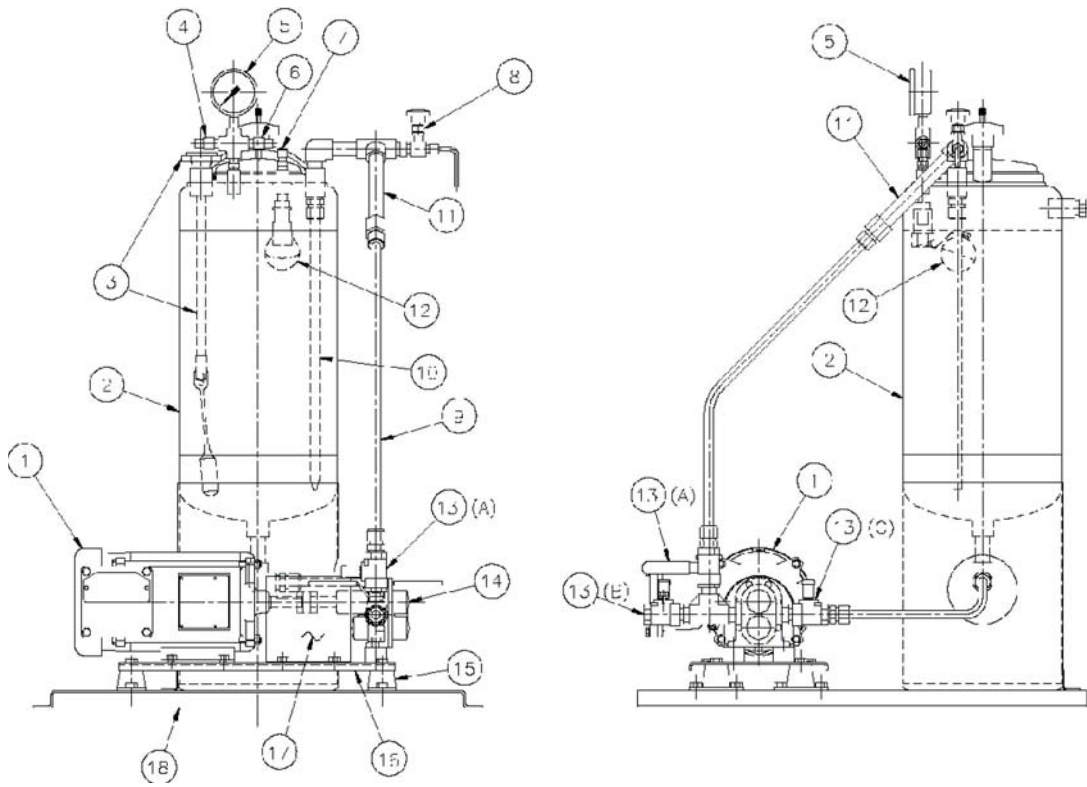
- a.
- b. (13).
- c. (13) (13)
- d. , (13C)
(9), (13),

e.

4. () , :

- a. (8),
- b.

5.



CMC-250

1	1	50142307002	, 1/2 . . . , 115/230	„	.
2	1	50142301720	„ 5	304SS	
2a	1	50142301719	„ 10	304SS	
3	1	50142310029			
4	1	50142200334		, 5	.
5	1	50142381037		, 0-60	.
6	1	50142303543		, 1	.
7	1	50142302882		1/4	, . . .
8	1	50142208006			
9	1	50142302204	, 1/2	,	. . .
10	1	50142302204		,	, . . .
11	1	50142304100	, 1/2	,	. . .
12	1	50142310046			.
13	3	50142303651	, 1/2	,	. . .
14	1	50142304008		NPT 3/4	
15	4	50142310101			
16	1	50142310061			
17	1	50142307353			
18	1	50142307831	, 30	x 32	

(1)

: ©2008 "

kpv.ims@gmail.com



NuFlo
Measurement Systems

NuFlo Measurement Systems
14450 John F. Kennedy Blvd.
Houston, TX 77032
www.nufflotech.com

North America:

800-654-3760

281-582-9500 (Houston)

877-891-6540 (Calgary)

UK:

44-1243-826741

Singapore:

65-6737-0444